

400 SERIES

MLPT400-S-W



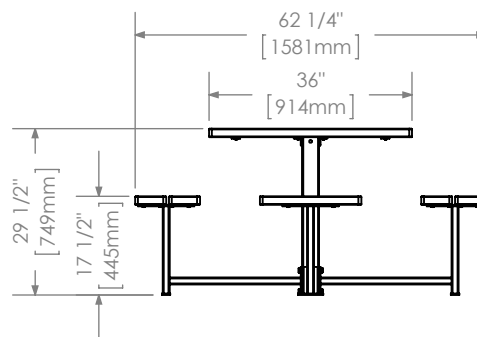
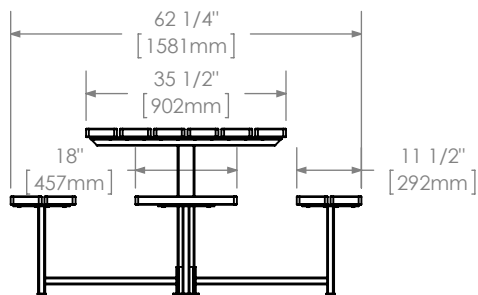
MATERIALS: The frame is H.S. steel tube and flat bar. Table top and seats manufactured using lpe wood slats.

FINISH: All steel components are protected with E-Coat rust proofing.
The Maglin Powdercoat System provides a durable finish on all metal surfaces. Wood slats are finished with penetrating sealers.

INSTALLATION: The table is delivered pre-assembled or knocked down.

TO SPECIFY: Select MLPT400-S-W
Choose:
- Powdercoat Color

OPTIONS:
- Wheelchair accessibility (WCA)
- Gaming board (GB)
- Direct Burial



DIMENSIONS:

Table Height: 29.5" (74.9cm)
Table Width: 62.25" (158.1cm)
Seat Height: 17.5" (44.5cm)
Weight: 231.34lbs (104.9kg)



MAGLIN™
Site Furniture

- Details and specifications may vary due to continuing improvements of our products.
- All drawings, specifications, design and details on this page remain the property of Maglin Site Furniture Inc. and may not be used without Maglin authorization.

PRODUCT & PRICING INFO
STREETSCAPES
303.398.7040 STREET-SCAPES.COM