

1050 SERIES

MLST1050B-BH-PC

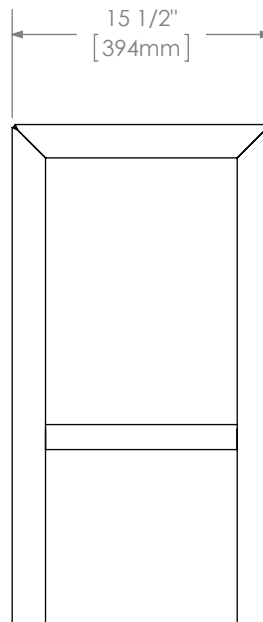
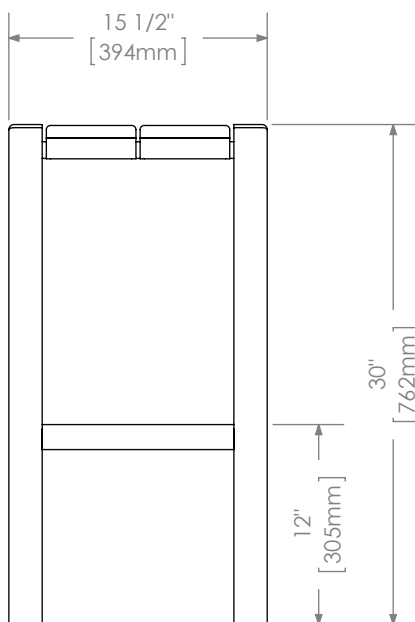


MATERIALS: The stool frame is constructed from formed steel and the tops employ 3/4" HDPC.

FINISH: All steel components are protected with E-Coat rust proofing.
The Maglin Powdercoat System provides a durable finish on all metal surfaces.

INSTALLATION: The stool comes preassembled with boards. The legs have 9/16" holes for anchoring.

TO SPECIFY: Select MLST1050B-BH-PC
Choose:
- Powdercoat Color
- HDPC Color



DIMENSIONS:

Height: 30" (76.2cm)
Length: 15.5" (39.4cm)
Depth: 15.5" (39.4cm)
Weight: 46.33lbs (21.0kg)



- Details and specifications may vary due to continuing improvements of our products.
- All drawings, specifications, design and details on this page remain the property of Maglin Site Furniture Inc. and may not be used without Maglin authorization.

