

# 1050 SERIES

## MLST1050B-BH-W

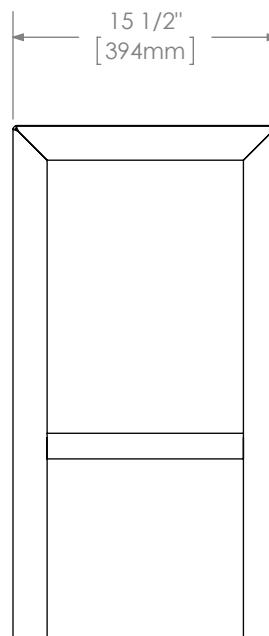
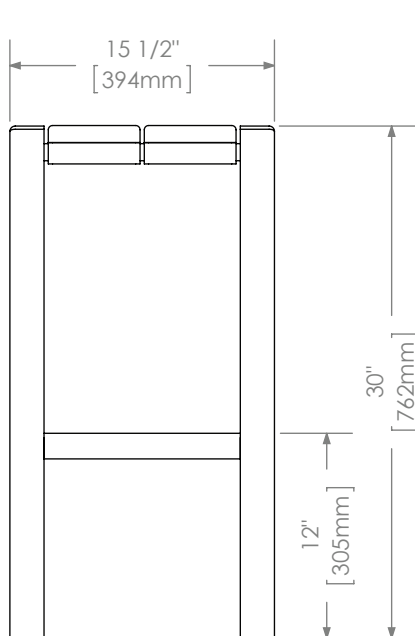


**MATERIALS:** The stool frame is constructed from formed steel and the tops employ 1" lpe wood.

**FINISH:** All steel components are protected with E-Coat rust proofing.  
The Maglin Powdercoat System provides a durable finish on all metal surfaces.

**INSTALLATION:** The stool is delivered pre-assembled. The legs have 9/16" holes for anchoring.

**TO SPECIFY:** Select MLST1050B-BH-W  
Choose:  
- Powdercoat Color



### DIMENSIONS:

Height: 30" (76.2cm)  
Length: 15.5" (39.4cm)  
Depth: 15.5" (39.4cm)  
Weight: 46.82lbs (21.2kg)



**MAGLIN™**  
Site Furniture

- Details and specifications may vary due to continuing improvements of our products.  
- All drawings, specifications, design and details on this page remain the property of Maglin Site Furniture Inc. and may not be used without Maglin authorization.

PRODUCT & PRICING INFO  
**STREETSCAPES**  
303.398.7040 [STREET-SCAPES.COM](http://STREET-SCAPES.COM)