



**DASH™ BENCH**

PRODUCT DATA



PRODUCT & PRICING INFO

 **STREETSCAPES**  
303.398.7040 [STREET-SCAPES.COM](http://STREET-SCAPES.COM)

**FORMS+SURFACES®**



## DASH™ BENCH

PRODUCT DATA

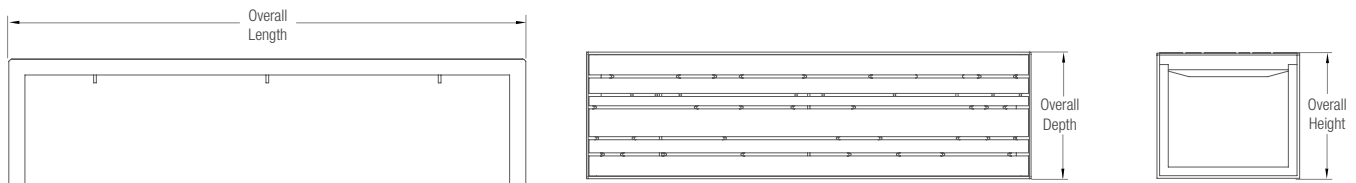
The **Dash Bench** pairs a seat cast of TENSU Ultra High Performance Concrete (UHPC) with a frame of powdercoated aluminum. Slotted perforations in the seat add visual interest and allow water and light to pass through.

### MATERIAL & CONSTRUCTION DETAILS

### INSTALLATION & MAINTENANCE

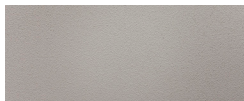
SEAT	FRAME	INSTALLATION	MAINTENANCE
<ul style="list-style-type: none"> <li>Bench seat is made of TENSU UHPC with an intrinsic UHPC finish in Natural color.</li> <li>TENSU surfaces are protected by an invisible hydrophobic treatment.</li> <li>Slight variations in color and surface texture can occur due to the nature of the TENSU manufacturing process.</li> </ul>	<ul style="list-style-type: none"> <li>Bench frame is made of aluminum with a powdercoat finish.</li> <li>See the Forms+Surfaces Powdercoat Chart for details. Custom RAL colors are available for an upcharge.</li> </ul>	<ul style="list-style-type: none"> <li>Dash Benches can be free-standing or surface mounted.</li> <li>Surface mount models include stainless steel mounting hardware.</li> </ul>	<ul style="list-style-type: none"> <li>TENSU surfaces can be cleaned as needed using a soft cloth or brush with water and a mild detergent. Surfaces should be thoroughly rinsed and allowed to dry.</li> <li>Avoid abrasive cleaners.</li> </ul>

### NOMINAL DIMENSIONS



MODEL	OVERALL LENGTH	OVERALL DEPTH	OVERALL HEIGHT	WEIGHT
SBDSH-72C	72" (1829 mm)	20.5" (521 mm)	18" (457 mm)	172 lbs (78 kg)

### UHPC COLOR: NATURAL



### ENVIRONMENTAL CONSIDERATIONS

- Please refer to the Dash Bench Environmental Data Sheet for detailed environmental impact information.
- Dash Benches are composed primarily of natural materials local to manufacturing.
- All Dash Benches use a low energy, resource efficient manufacturing and curing process.
- All bench components disassemble at end of life and are fully recyclable.
- Low maintenance and extremely long service life.
- Powdercoat finishes are no- or low-VOC, depending on color.
- Manufactured in the USA.

### MODEL NUMBER AND DESCRIPTION

MODEL	DESCRIPTION
SBDSH-72C	Dash Bench, 6 foot, backless, TENSU UHPC



## DASH™ BENCH

### PRODUCT OPTIONS

The following options are available for an upcharge

Premium Texture Colors from Forms+Surfaces Powdercoat Chart
Custom RAL powdercoat color

**TO ORDER SPECIFY:** Quantity, model, powdercoat color for frame, and freestanding or surface mount.

**NOTE:** Because different computers, monitors, and printers render colors and textures differently, actual finishes may vary from those shown here.