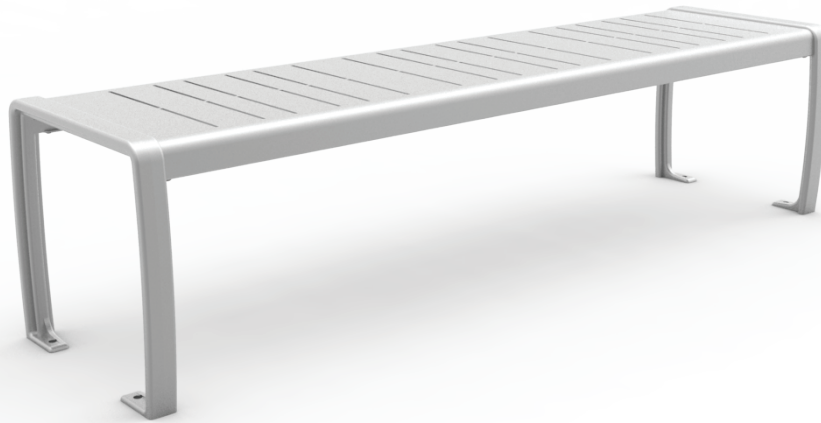


# 970 SERIES

## MLB970B-M



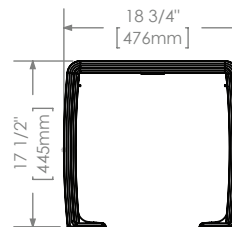
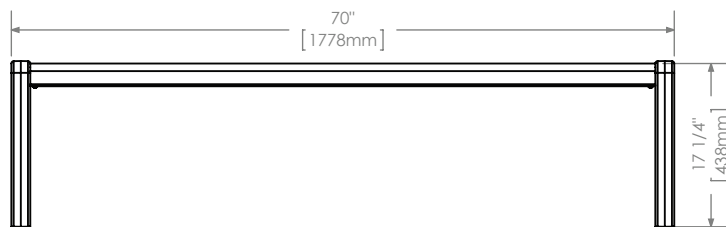
**MATERIALS:** Bench ends are made from solid cast aluminum. The seat is constructed using lasered steel panels.

**FINISH:** All steel components are protected with E-Coat rust proofing.  
The Maglin Powdercoat System provides a durable finish on all metal surfaces.

**INSTALLATION:** The bench is delivered pre-assembled. Holes (0.5") are provided in each foot for securing to base.

**TO SPECIFY:** Select MLB970B-M  
Choose:  
- Powdercoat Color

**OPTIONS:**  
- Custom Laser Designs  
- Personalization



### DIMENSIONS:

Height: 17.5" (44.5 cm)  
Length: 70" (177.8 cm)  
Depth: 18.75" (47.6 cm)  
Weight: 65.95lbs (29.9kg)



- All drawings, specifications, design and details on this page remain the property of Maglin Site Furniture Inc. and may not be used without Maglin authorization.
- Details and specifications may vary due to continuing improvements of our products.

